



Clear D8
Sample Matrix:
CBD/HEMP
Derivative Products
(Inhalation - Heated)



License No. 800025015
FL License # CMTL-0003
CLIA No. 10D1094068

Certificate of Analysis

Compliance Test

Fresh Bros
3050 Westwood Dr
Las Vegas, Nevada 89109

Batch # D8-001
Batch Date: 2021-09-09
Extracted From: Hemp

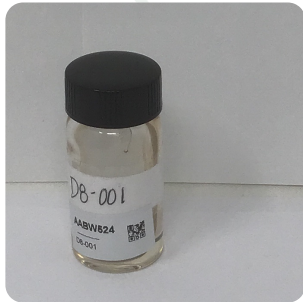
Sampling Method: MSP 7.3.1
Test Reg State: Florida

Production Facility: Fresh Bros
Production Date: 2021-09-09

Order # ADV210909-010012
Order Date: 2021-09-09
Sample # AABW524

Sampling Date: 2021-09-10
Lab Batch Date: 2021-09-10
Completion Date: 2021-09-20

Initial Gross Weight: 53.905 g



Product Image

Potency
Tested

Heavy Metals
Passed

2,3-Butanedione
Passed

Mycotoxins
Passed

Pesticides
Passed

Residual Solvents
Passed

Pathogenic Microbiology
Passed

Listeria Monocytogenes
Passed

Vitamin E
Passed

Delta 8/Delta 10 Potency

12

Specimen Weight: 59.090 mg

Analyte	Dilution (1:n)	LOD (%)	LOQ (%)	Result (mg/g)	(%)
Delta-8 THC	1000.000	0.000026	0.001	903.120	90.312
Delta-10 THC	1000.000	0.000003	0.001		<LOQ
Delta-9 THC	1000.000	0.000013	0.001		<LOQ
CBC	1000.000	0.000018	0.001		<LOQ
CBD	1000.000	0.000054	0.001		<LOQ
THCV	1000.000	0.000007	0.001		<LOQ
THCA-A	1000.000	0.000032	0.001		<LOQ
CBN	1000.000	0.000014	0.001		<LOQ
CBGA	1000.000	0.00008	0.001		<LOQ
CBG	1000.000	0.000248	0.001		<LOQ
CBDV	1000.000	0.000065	0.001		<LOQ
CBDA	1000.000	0.00001	0.001		<LOQ

Tested (LCUV)

Potency Summary

Total Delta 8 90.312%	Total Delta 10 None Detected
Total THC None Detected	Total CBD None Detected
Total CBG None Detected	Total CBN None Detected
Other Cannabinoids None Detected	Total Cannabinoids 90.312%

Xueli Gao
Ph.D., DABT
Lab Toxicologist

Ailixia Sun
D.H.Sc., M.Sc., B.Sc., MT (AAB)
Lab Director/Principal Scientist



Definitions and Abbreviations used in this report: *Total CBD = CBD + (CBD-A * 0.877), *Total THC = THCA-A * 0.877 + Delta 9 THC, *CBG Total = (CBGA * 0.877) + CBG, *CBN Total = (CBNA * 0.877) + CBN, *Other Cannabinoids Total = CBC + CBDV + THCV + THCV-A, *Total Detected Cannabinoids = CBD Total + CBG Total + CBN Total + THC Total + CBC + CBDV + THCV + THCV-A, *Analyte Details above show the Dry Weight Concentrations unless specified as 12% moisture concentration. (mg/ml) = Milligrams per Milliliter, LOQ = Limit of Quantitation, LOD = Limit of Detection, Dilution = Dilution Factor (ppb) = Parts per Billion, (%) = Percent, (cfu/g) = Colony Forming Unit per Gram (cfu/g) = Colony Forming Unit per Gram, LOD = Limit of Detection, (µg/g) = Microgram per Gram (ppm) = Parts per Million, (ppm) = (µg/g), (aw) = aw (area ratio) = Area Ratio, (mg/Kg) = Milligram per Kilogram, *Measurement of Uncertainty = +/- 5%



This report shall not be reproduced, without written approval, from ACS Laboratory. The results of this report relate only to the material or product analyzed. Test results are confidential unless explicitly waived otherwise. Accredited by a third-party accrediting body as a competent testing laboratory pursuant to ISO/IEC 17025 of the International Organization for Standardization.





License No. 800025015
FL License # CMTL-0003
CLIA No. 10D1094068

Certificate of Analysis

Compliance Test

Fresh Bros Batch # D8-001 Sampling Method: MSP 7.3.1 Production Facility: Fresh Bros
3050 Westwood Dr Batch Date: 2021-09-09 Test Reg State: Florida Production Date: 2021-09-09
Las Vegas, Nevada 89109 Extracted From: Hemp

Order # ADV210909-010012 Sampling Date: 2021-09-10 Initial Gross Weight: 53.905 g
Order Date: 2021-09-09 Lab Batch Date: 2021-09-10
Sample # AABW524 Completion Date: 2021-09-20

H Heavy Metals Passed (ICP-MS)
Specimen Weight: 253.700 mg

Analyte	LOQ (ppb)	Action Level (ppb)	Result (ppb)	Analyte	LOQ (ppb)	Action Level (ppb)	Result (ppb)
Arsenic (As)	100	1500	<LOQ	Cadmium (Cd)	100	500	<LOQ
Lead (Pb)	100	500	<LOQ	Mercury (Hg)	100	3000	<LOQ

2,3-butanedione(Diacetyl) Passed (GCMS)
Specimen Weight: 8.800 mg

Analyte	LOQ (ppm)	Result (ppm)
2,3-Butanedione	0.024	<LOQ

Mycotoxins Passed (LCMS)
Specimen Weight: 152.300 mg

Analyte	LOQ (ppb)	Action Level (ppb)	Result (ppb)	Analyte	LOQ (ppb)	Action Level (ppb)	Result (ppb)
Aflatoxin B1	6	20	<LOQ	Aflatoxin B2	6	20	<LOQ
Aflatoxin G1	6	20	<LOQ	Aflatoxin G2	6	20	<LOQ
Ochratoxin A	12	20	<LOQ				

Xueli Gao
Xueli Gao, Ph.D., DABT
Lab Toxicologist

Aixia Sun
Aixia Sun, D.H.Sc., M.Sc., B.Sc., MT (AAB)
Lab Director/Principal Scientist



Definitions and Abbreviations used in this report: *Total CBD = CBD + (CBD-A * 0.877), *Total THC = THCA-A * 0.877 + Delta 9 THC, *CBG Total = (CBGA * 0.877) + CBG, *CBN Total = (CBNA * 0.877) + CBN, *Other Cannabinoids Total = CBC + CBDV + THCV + THCV-A, *Total Detected Cannabinoids = CBD Total + CBG Total + CBN Total + THC Total + CBC + CBDV + THCV + THCV-A, *Analyte Details above show the Dry Weight Concentrations unless specified as 12% moisture concentration. (mg/ml) = Milligrams per Milliliter, LOQ = Limit of Quantitation, LOD = Limit of Detection, Dilution = Dilution Factor (ppb) = Parts per Billion, (%) = Percent, (cfu/g) = Colony Forming Unit per Gram (cfu/g) = Colony Forming Unit per Gram, , LOD = Limit of Detection, (µg/g) = Microgram per Gram (ppm) = Parts per Million, (ppm) = (µg/g), (aw) = aw (area ratio) = Area Ratio, (mg/Kg) = Milligram per Kilogram, *Measurement of Uncertainty = +/- 5%

This report shall not be reproduced, without written approval, from ACS Laboratory. The results of this report relate only to the material or product analyzed. Test results are confidential unless explicitly waived otherwise. Accredited by a third-party accrediting body as a competent testing laboratory pursuant to ISO/IEC 17025 of the International Organization for Standardization.



License No. 800025015
FL License # CMTL-0003
CLIA No. 10D1094068

Certificate of Analysis

Compliance Test

Fresh Bros
3050 Westwood Dr
Las Vegas, Nevada 89109

Batch # D8-001
Batch Date: 2021-09-09
Extracted From: Hemp

Sampling Method: MSP 7.3.1
Test Reg State: Florida

Production Facility: Fresh Bros
Production Date: 2021-09-09

Order # ADV210909-010012
Order Date: 2021-09-09
Sample # AABW524

Sampling Date: 2021-09-10
Lab Batch Date: 2021-09-10
Completion Date: 2021-09-20

Initial Gross Weight: 53.905 g

Pesticides FL V4 **Passed**
(LCMS/GCMS)
Specimen Weight: 152.300 mg
Dilution Factor: 9.849

Analyte	LOQ (ppb)	Action Level (ppb)	Result (ppb)	Analyte	LOQ (ppb)	Action Level (ppb)	Result (ppb)
Abamectin	28.23	300	<LOQ	Acephate	30	3000	<LOQ
Acequinocyl	48	2000	<LOQ	Acetamiprid	30	3000	<LOQ
Aldicarb	30	100	<LOQ	Azoxystrobin	10	3000	<LOQ
Bifenazate	30	3000	<LOQ	Bifenthrin	30	500	<LOQ
Boscalid	10	3000	<LOQ	Captan	30	3000	<LOQ
Carbaryl	10	500	<LOQ	Carbofuran	10	100	<LOQ
Chlorantraniliprole	10	3000	<LOQ	Chlordane	10	100	<LOQ
Chlorfenapyr	30	100	<LOQ	Chloromequat Chloride	10	3000	<LOQ
Chlorpyrifos	30	100	<LOQ	Clofentezine	30	500	<LOQ
Coumaphos	48	100	<LOQ	Cyfluthrin	30	1000	<LOQ
Cypermethrin	30	1000	<LOQ	Daminozide	30	100	<LOQ
Diazinon	30	200	<LOQ	Dichlorvos	30	100	<LOQ
Dimethoate	30	100	<LOQ	Dimethomorph	48	3000	<LOQ
Ethoprophos	30	100	<LOQ	Etofenprox	30	100	<LOQ
Etoxazole	30	1500	<LOQ	Fenhexamid	10	3000	<LOQ
Fenoxycarb	30	100	<LOQ	Fenprosimate	30	2000	<LOQ
Fipronil	30	100	<LOQ	Fonicamid	30	2000	<LOQ
Fludioxonil	48	3000	<LOQ	Hexythiazox	30	2000	<LOQ
Imazalil	30	100	<LOQ	Imidacloprid	30	3000	<LOQ
Kresoxim Methyl	30	1000	<LOQ	Malathion	30	2000	<LOQ
Metalaxyl	10	3000	<LOQ	Methiocarb	30	100	<LOQ
Methomyl	30	100	<LOQ	methyl-Parathion	10	100	<LOQ
Mevinphos	10	100	<LOQ	Myclobutanil	30	3000	<LOQ
Naled	30	500	<LOQ	Oxamyl	30	500	<LOQ
Paclotrazol	30	100	<LOQ	Pentachloronitrobenzene	10	200	<LOQ
Permethrin	30	1000	<LOQ	Phosmet	30	200	<LOQ
Piperonylbutoxide	30	3000	<LOQ	Prallethrin	30	400	<LOQ
Propiconazole	30	1000	<LOQ	Propoxur	30	100	<LOQ
Pyrethrins	30	1000	<LOQ	Pyridaben	30	3000	<LOQ
Spinetoram	10	3000	<LOQ	Spinosad	30	3000	<LOQ
Spiromesifen	30	3000	<LOQ	Spirotetramat	30	3000	<LOQ
Spiroxamine	30	100	<LOQ	Tebuconazole	30	1000	<LOQ
Thiacloprid	30	100	<LOQ	Thiamethoxam	30	1000	<LOQ
Trifloxystrobin	30	3000	<LOQ				

Xueli Gao
Xueli Gao
Ph.D., DABT
Lab Toxicologist

Aixia Sun
Aixia Sun
D.H.Sc., M.Sc., B.Sc., MT (AAB)
Lab Director/Principal Scientist



Definitions and Abbreviations used in this report: *Total CBD = CBD + (CBD-A * 0.877), *Total THC = THCA-A * 0.877 + Delta 9 THC, *CBG Total = (CBGA * 0.877) + CBG, *CBN Total = (CBNA * 0.877) + CBN, *Other Cannabinoids Total = CBC + CBDV + THCV + THCV-A, *Total Detected Cannabinoids = CBD Total + CBG Total + CBN Total + THC Total + CBC + CBDV + THCV + THCV-A, *Analyte Details above show the Dry Weight Concentrations unless specified as 12% moisture concentration. (mg/ml) = Milligrams per Milliliter, LOQ = Limit of Quantitation, LOD = Limit of Detection, Dilution = Dilution Factor (ppb) = Parts per Billion, (%) = Percent, (cfu/g) = Colony Forming Unit per Gram (cfu/g) = Colony Forming Unit per Gram, , LOD = Limit of Detection, (µg/g) = Microgram per Gram (ppm) = Parts per Million, (ppm) = (µg/g), (aw) = aw (area ratio) = Area Ratio, (mg/Kg) = Milligram per Kilogram, *Measurement of Uncertainty = +/- 5%



This report shall not be reproduced, without written approval, from ACS Laboratory. The results of this report relate only to the material or product analyzed. Test results are confidential unless explicitly waived otherwise. Accredited by a third-party accrediting body as a competent testing laboratory pursuant to ISO/IEC 17025 of the International Organization for Standardization.



License No. 800025015
FL License # CMTL-0003
CLIA No. 10D1094068

Certificate of Analysis

Compliance Test

Fresh Bros
3050 Westwood Dr
Las Vegas, Nevada 89109

Batch # D8-001
Batch Date: 2021-09-09
Extracted From: Hemp

Sampling Method: MSP 7.3.1
Test Reg State: Florida

Production Facility: Fresh Bros
Production Date: 2021-09-09

Order # ADV210909-010012
Order Date: 2021-09-09
Sample # AABW524

Sampling Date: 2021-09-10
Lab Batch Date: 2021-09-10
Completion Date: 2021-09-20

Initial Gross Weight: 53.905 g

Residual Solvents - FL (CBD) **Passed**
(GCMS)

Specimen Weight: 8.800 mg
Dilution Factor: 1.000

Analyte	LOQ (ppm)	Action Level (ppm)	Result (ppm)	Analyte	LOQ (ppm)	Action Level (ppm)	Result (ppm)
Acetone	2.08	5000	<LOQ	Benzene	0.02	2	<LOQ
Butanes	2.5	2000	<LOQ	Ethanol	2.78	5000	<LOQ
Ethyl Acetate	1.11	5000	<LOQ	Heptane	1.39	5000	<LOQ
Hexane	1.17	290	<LOQ	Isopropyl alcohol	1.39	500	<LOQ
Methanol	0.69	3000	<LOQ	Pentane	2.08	5000	<LOQ
Propane	5.83	2100	<LOQ	Toluene	2.92	890	<LOQ
Total Xylenes	2.92	2170	<LOQ				

Pathogenic Microbiology SAE (MicroArray) **Passed**
(Micro Array)

Specimen Weight: 1016.240 mg
Dilution Factor: 1.000

Analyte	Result (cfu/g)	Analyte	Result (cfu/g)
Aspergillus flavus	Absence in 1g	Aspergillus fumigatus	Absence in 1g
Aspergillus niger	Absence in 1g	Aspergillus terreus	Absence in 1g
Salmonella	Absence in 1g	STEC E. Coli	Absence in 1g

Xueli Gao
Xueli Gao
Ph.D., DABT
Lab Toxicologist

Aixia Sun
Aixia Sun
D.H.Sc., M.Sc., B.Sc., MT (AAB)
Lab Director/Principal Scientist



Definitions and Abbreviations used in this report: *Total CBD = CBD + (CBD-A * 0.877), *Total THC = THCA-A * 0.877 + Delta 9 THC, *CBG Total = (CBGA * 0.877) + CBG, *CBN Total = (CBNA * 0.877) + CBN, *Other Cannabinoids Total = CBC + CBDV + THCV + THCV-A, *Total Detected Cannabinoids = CBD Total + CBG Total + CBN Total + THC Total + CBC + CBDV + THCV + THCV-A, *Analyte Details above show the Dry Weight Concentrations unless specified as 12% moisture concentration. (mg/ml) = Milligrams per Milliliter, LOQ = Limit of Quantitation, LOD = Limit of Detection, Dilution = Dilution Factor (ppb) = Parts per Billion, (%) = Percent, (cfu/g) = Colony Forming Unit per Gram (cfu/g) = Colony Forming Unit per Gram, , LOD = Limit of Detection, (µg/g) = Microgram per Gram (ppm) = Parts per Million, (ppm) = (µg/g), (aw) = aw (area ratio) = Area Ratio, (mg/Kg) = Milligram per Kilogram, *Measurement of Uncertainty = +/- 5%



This report shall not be reproduced, without written approval, from ACS Laboratory. The results of this report relate only to the material or product analyzed. Test results are confidential unless explicitly waived otherwise. Accredited by a third-party accrediting body as a competent testing laboratory pursuant to ISO/IEC 17025 of the International Organization for Standardization.



License No. 800025015
FL License # CMTL-0003
CLIA No. 10D1094068

Certificate of Analysis

Compliance Test

Fresh Bros 3050 Westwood Dr Las Vegas, Nevada 89109	Batch # D8-001 Batch Date: 2021-09-09 Extracted From: Hemp	Sampling Method: MSP 7.3.1 Test Reg State: Florida	Production Facility: Fresh Bros Production Date: 2021-09-09
--	--	---	--

Order # ADV210909-010012 Order Date: 2021-09-09 Sample # AABW524	Sampling Date: 2021-09-10 Lab Batch Date: 2021-09-10 Completion Date: 2021-09-20	Initial Gross Weight: 53.905 g
--	--	--------------------------------

Listeria Monocytogenes **Passed**
(qPCR)
Specimen Weight: 1021.500 mg
Dilution Factor: 1.000

Analyte	Action Level (cfu/g)	Result
Listeria Monocytogenes	1	Absence in 1g

Vitamin E (Tocopheryl Acetate) **Passed**
(LC-MS)
Specimen Weight: 152.300 mg
Dilution Factor: 9.849

Analyte	Result (ppb)
Vitamin E Acetate	<LOQ

Xueli Gao
Xueli Gao
Ph.D., DABT
Lab Toxicologist

Aixia Sun
Aixia Sun
D.H.Sc., M.Sc., B.Sc., MT (AAB)
Lab Director/Principal Scientist



Definitions and Abbreviations used in this report: *Total CBD = CBD + (CBD-A * 0.877), *Total THC = THCA-A * 0.877 + Delta 9 THC, *CBG Total = (CBGA * 0.877) + CBG, *CBN Total = (CBNA * 0.877) + CBN, *Other Cannabinoids Total = CBC + CBDV + THCV + THCV-A, *Total Detected Cannabinoids = CBD Total + CBG Total + CBN Total + THC Total + CBC + CBDV + THCV + THCV-A, *Analyte Details above show the Dry Weight Concentrations unless specified as 12% moisture concentration. (mg/ml) = Milligrams per Milliliter, LOQ = Limit of Quantitation, LOD = Limit of Detection, Dilution = Dilution Factor (ppb) = Parts per Billion, (%) = Percent, (cfu/g) = Colony Forming Unit per Gram (cfu/g) = Colony Forming Unit per Gram, , LOD = Limit of Detection, (µg/g) = Microgram per Gram (ppm) = Parts per Million, (ppm) = (µg/g), (aw) = aw (area ratio) = Area Ratio, (mg/Kg) = Milligram per Kilogram, *Measurement of Uncertainty = +/- 5%



This report shall not be reproduced, without written approval, from ACS Laboratory. The results of this report relate only to the material or product analyzed. Test results are confidential unless explicitly waived otherwise. Accredited by a third-party accrediting body as a competent testing laboratory pursuant to ISO/IEC 17025 of the International Organization for Standardization.